

**Delta Psi Epsilon
Christian Sorority, Inc.**

Established 1999

deltapsiepsilon.com



DELTAPSI EPSILON

The sorority that puts God first.

[For Schools]

An informational guide for
colleges and universities

Delta Psi Epsilon Christian Sorority, Inc. is the premier sorority for Christian women with 18 chapters and colonies in 14 states in the United States. Delta Psi Epsilon is an inclusive sorority with 33% of its members belonging to NPHC sororities.



ABOUT DELTA PSI EPSILON CHRISTIAN SORORITY, INC.

UNDERGRADUATE REQUIREMENTS FOR MEMBERSHIP

In order to be eligible for active membership, a woman must be enrolled in an accredited college or university pursuing a Bachelor's degree or its equivalent having at minimum a 2.5 GPA.

DISCRIMINATION POLICY

We expressly prohibit discrimination by any component part of the Sorority or by any person acting on behalf of the organization on the basis of race, national origin, disability, appearance, or social status. We accept members that are members of other organizations including national sororities.

HAZING POLICY

Hazing will not occur in any chapter or colony. Hazing is stupid, dangerous, and illegal. Not to mention that hazing is definitely against the laws of God. Every soror of Delta Psi Epsilon will gain the respect of her fellow sisters through love and not through hazing. Hazing does not build respect, it builds fear. Hazing is defined as any unreasonable requirement of activity of new members

and/or members which endangers the physical well-being of the individual, produces physical or mental discomfort, causes embarrassment, humiliation, ridicule, or in anyway degrades the individual.

CHARTERING PROCESS

Students must have at least 6 members in their group (sorority requirement). Please differ to the college or university if the number for approved campus organizations is higher.

Students will complete individual letters of interest. These letters of interest will be approved or denied by the Sorority. Students must submit a roster for their group which includes names, contact information, and classification. Approved individuals will complete our membership application and provide 3 recommendations. Applicants will be accepted or denied at this phase. Approved individuals will complete interviews which will be conducted in person. Applicants will be accepted or denied at this phase. Final approved applicants will complete our Membership Intake Program.

our history

Founded in 1999, Delta Psi Epsilon Christian Sorority, Inc. was formed to give women the opportunity to join a Greek-lettered organization, but at the same time hold fast to their Christian values. We are a Christian sorority dedicated to put God first in all we do.

This premier sorority for Christian women was founded on January 16, 1999, by Sorors Carla Griffith, Vila-Sheree Watson and Nicole Gardner. Carla, Vila-Sheree and Nicole met each other as a result of being apart of a local, Christian club at Oakwood University. This sorority was formed to give women an opportunity to

become apart of a Greek-lettered organization, but at the same time hold fast to their Christian values. Many strides were taken through the years to further cement and solidify the organization before becoming national.

In 2000, our sorority became incorporated. February of 2004, the sorority took in its first members at Miles College. These 7 women are known as the Seven Heavenly Virtues. These are Sonya Archie, Cheryl Plaster-Vinson, Rayquisha Timmons, LaTonya Sparks-Hinton, Maritza Barnes, Mary Cole, and Griena Knight-Davis.



our purpose

The purpose of Delta Psi Epsilon Christian Sorority, Inc. is to bring Christ to women of all races, creeds, tongues and denominations. It is our goal to spread the love of God throughout the world by the association of women.

Through carrying this torch for Christ, we find ourselves humbled that He has given us the opportunity to be a witness for Him. For this is His ministry and not our own. If we didn't allow ourselves to be used, we realize He would use someone else.

We are DELIVERED, through the blood of Jesus Christ as an atonement for our sins. Through this deliverance we have been washed and redeemed by the blood of the

Lamb. We are made whole and by His stripes, we are healed.

We are POWERFUL, through the Holy Spirit we have received power! We have the power to overcome, power to move forward and power to keep that momentum.

We are ENLIGHTENED, through the eyes of God. It is because of His love that we were once blind, but now we see.

Our mission is to be an unstoppable army for the Lord, honoring the Great Commission which is to go into all of the world and preach and teach the gospel of Christ!

our structure



FOUNDER VILA-SHEREE WATSON
National President
 vwatson@deltapsiepsilon.com



SOROR AISHA GULLETTE
National VP, Operations
 agullette@deltapsiepsilon.com



SOROR TERRI MAYNIE
National Ministries Director
 tmaynie@deltapsiepsilon.com

NATIONAL EXECUTIVE OFFICERS

VILA-SHEREE WATSON
 National President

SOROR AISHA GULLETTE
 National Vice President, Operations

SOROR TERRI MAYNIE
 National Ministries Director

FOUNDER NICOLE GARDNER
 National Treasurer

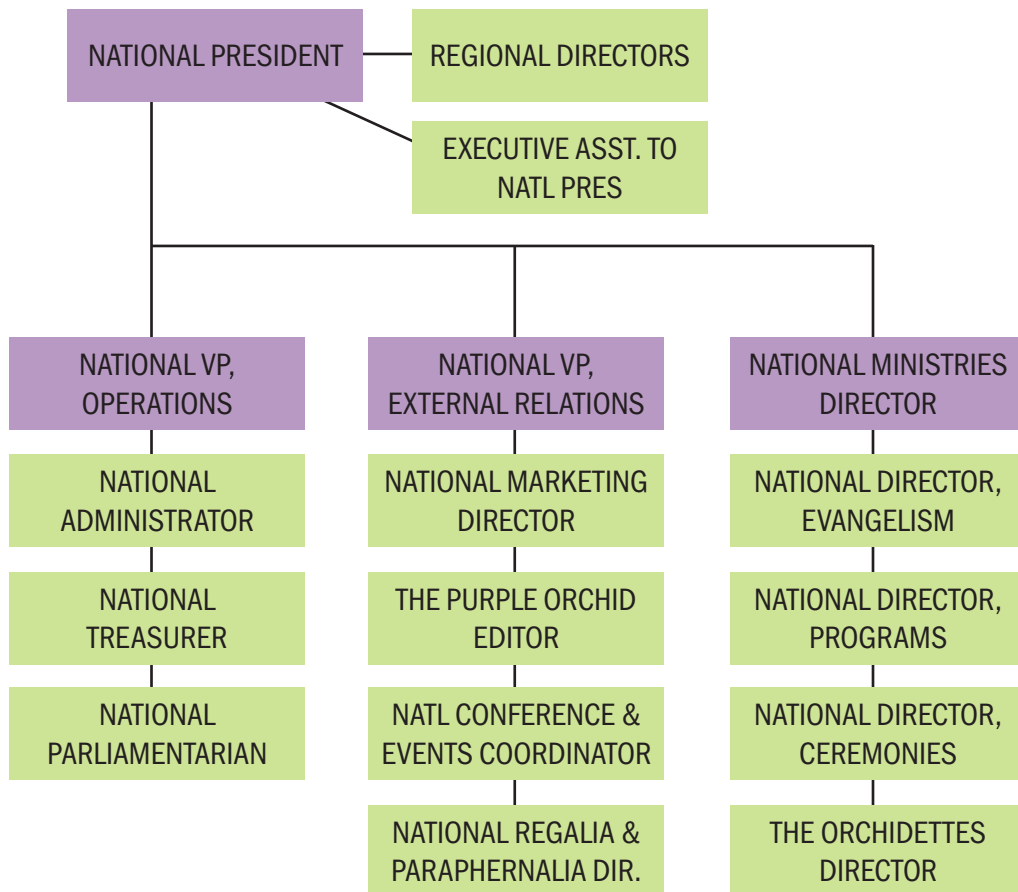
SOROR FLORA JACKSON
 National Director, Evangelism

SOROR M. EILEEN WALKER
 National Director, Programs

SOROR JAMESHA WARD
 National Director, Ceremonies

REGIONAL DIRECTORS

SOROR CHERESE GREGORY
 Great Lakes





OUR CHAPTERS

ALPHA

(designated for our founders)

UNDERGRADUATE

Beta

Southeastern Louisiana University
Hammond, LA

Gamma

Bethune-Cookman University
Daytona Beach, FL

Delta

Indiana University of Pennsylvania
Indiana, PA

GRADUATE

Alpha Omega

Chicago, IL

Beta Omega

Washington, DC

Gamma Omega

New York, NY

Delta Omega
Philadelphia, PA

Epsilon Omega

Dallas, TX

Zeta Omega

Atlanta, GA

Eta Omega

Virginia Beach, VA

Theta Omega

Birmingham, AL

Kappa Omega

Wilmington, NC

COLONIES

Baltimore City-wide (MD)

Houston City-wide (TX)

Montgomery City-wide (AL)

Richmond Metro Area (VA)

Raleigh-Durham City-wide (NC)

Shreveport City-wide (LA)

OUR COVERING

The United Council of Christian Fraternities and Sororities, Inc. (UCCFS) is an impactful leader founded on the principles of being on one accord, forming a cooperative ministry and providing leadership training for the Christian fraternity and sorority movement.

UCCFS brings together Christian fraternities and sororities working to have a greater impact at university campuses and communities. The council gives legitimacy to each organization among peers as they navigate through ministerial and university systems.

Finally, the council provides leadership training and counsel to the organizational officers in an attempt to train effective and efficient leaders in the kingdom of God.

For more information, visit uccfs.org.

UCCFS MEMBER ORGANIZATIONS

Alpha Nu Omega, Inc.-

Christian Fraternity and Sorority

Delta Psi Epsilon Christian Sorority, Inc.

Men of God Christian Fraternity, Inc.

Zeta Phi Zeta Christian Fraternity & Sorority, Inc.

Gamma Phi Delta Christian Fraternity, Inc.